

3
BED

Substantial Detached Bungalow with Out-Buildings

55, Lincoln Avenue, Peacehaven, BN10 7JU

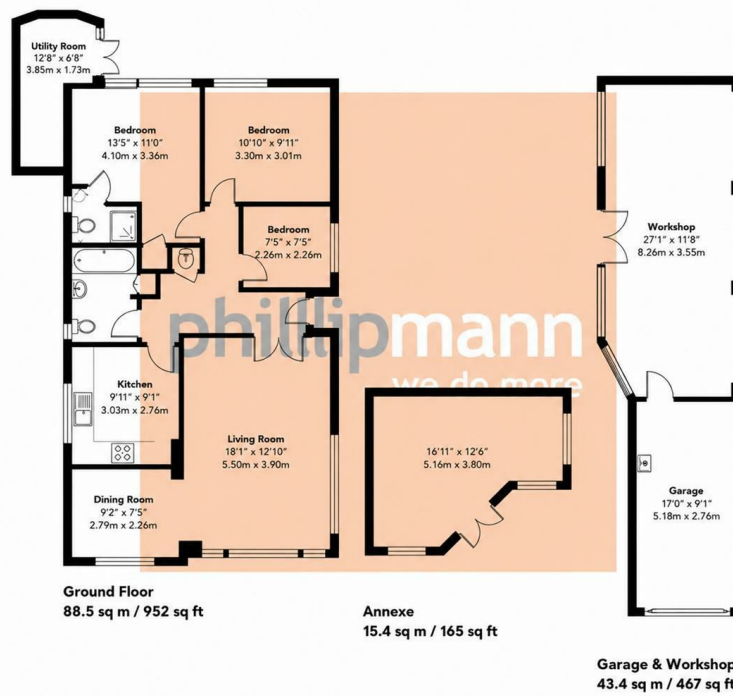


Price £429,999

Freehold

phillipmann
we do more

www.phillipmann.com



inbrief...

Positioned in the sought-after coastal town of Peacehaven, this substantial detached bungalow on Lincoln Avenue presents an exceptional opportunity for buyers seeking generous living space, flexibility and long-term potential. Extending to over 1500sqft, the property combines practical family living with versatile accommodation, making it particularly attractive for downsizers who still want space, growing families, or buyers looking to incorporate home-working or hobby areas into everyday life.

The accommodation is thoughtfully arranged, centered around a bright and spacious living/dining area that creates a welcoming heart to the home. The kitchen is functional and well connected to the main reception space, supporting both day-to-day living and social occasions. Three bedrooms accompany, with the principal bedroom benefiting from an en-suite shower room alongside a separate family bathroom.

One of the property's strongest features is its adaptability. In addition to the garage, there is an impressive 27ft workshop, presenting clear potential for a studio, gym, storage area or future conversion subject to the relevant permissions. The separate garden room further enhances the flexibility of the home and could easily be a multi functional space. Externally, the bungalow benefits from a private driveway providing ample off-road parking and a low-maintenance front and rear garden designed for ease of upkeep.

From a location perspective, Peacehaven continues to attract buyers looking for coastal living within accessible reach of Brighton and surrounding Sussex towns. The area offers local amenities, schools, transport links and renowned cliff-top walks. Viewings are highly advised to appreciate this home which is being offered for sale with NO CHAIN.



EPC - D

Council Tax Band - D

moreinfo...



Phillip Mann Peacehaven Office
226-230 South Coast Road, Peacehaven, BN10 8JR
01273 586622

To see more details on this & all our homes go to www.phillipmann.com